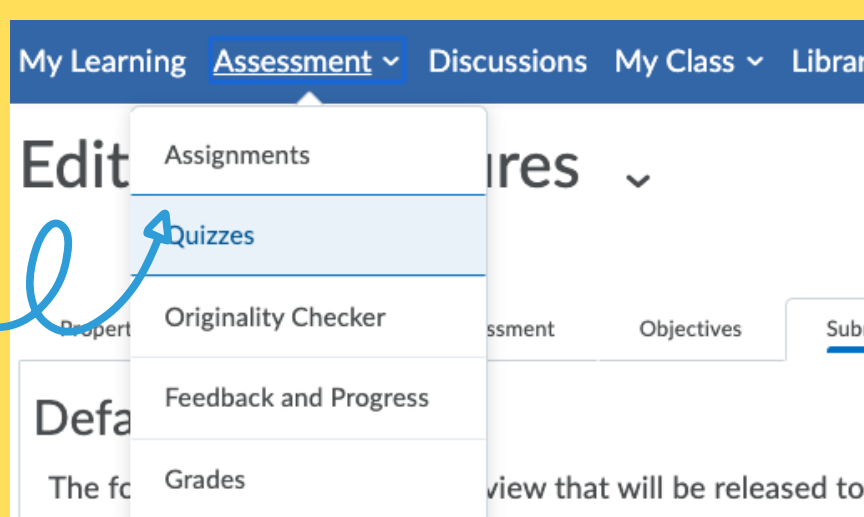


# QUIZZES IN BRIGHTSPACE



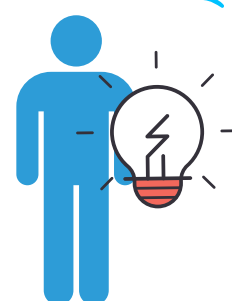
## WHAT CAN I USE IT FOR?

### Formative Knowledge Checks

Quizzes can be used as a way for students to assess their own progress in the course content.

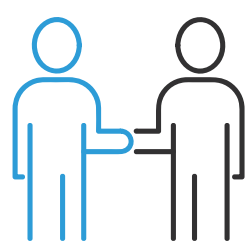
### Self Correcting Assessments

Auto-graded quizzes eliminate the need to grade individual student attempts and speed up the feedback process. Quiz grades can be easily transferred to UCD Gradebook.



### Providing (individual/group) feedback

Feedback can be provided to students immediately or at a specific date. Combining quizzes with Intelligent Agents (advanced function) can tailor a learning pathway for an individual student based on their performance.



## HOW DIFFICULT IS IT?

EASY

- Setting up basic formative assessment without grades
- Setting the "Submission View", the way results are displayed to students after the quiz

INTERMEDIATE

- Generating Question Pools from existing quizzes
- Attaching grades with an appropriate scheme ([see UCD Assessment guide](#))

ADVANCED

- Utilising quiz data to support and check students' progress
- Personalising feedback/learning pathways based on performance

## Resources

- [Quiz Set up](#)
- [Things to watch out for](#)
- [Best Practice and Question Types](#)